

13

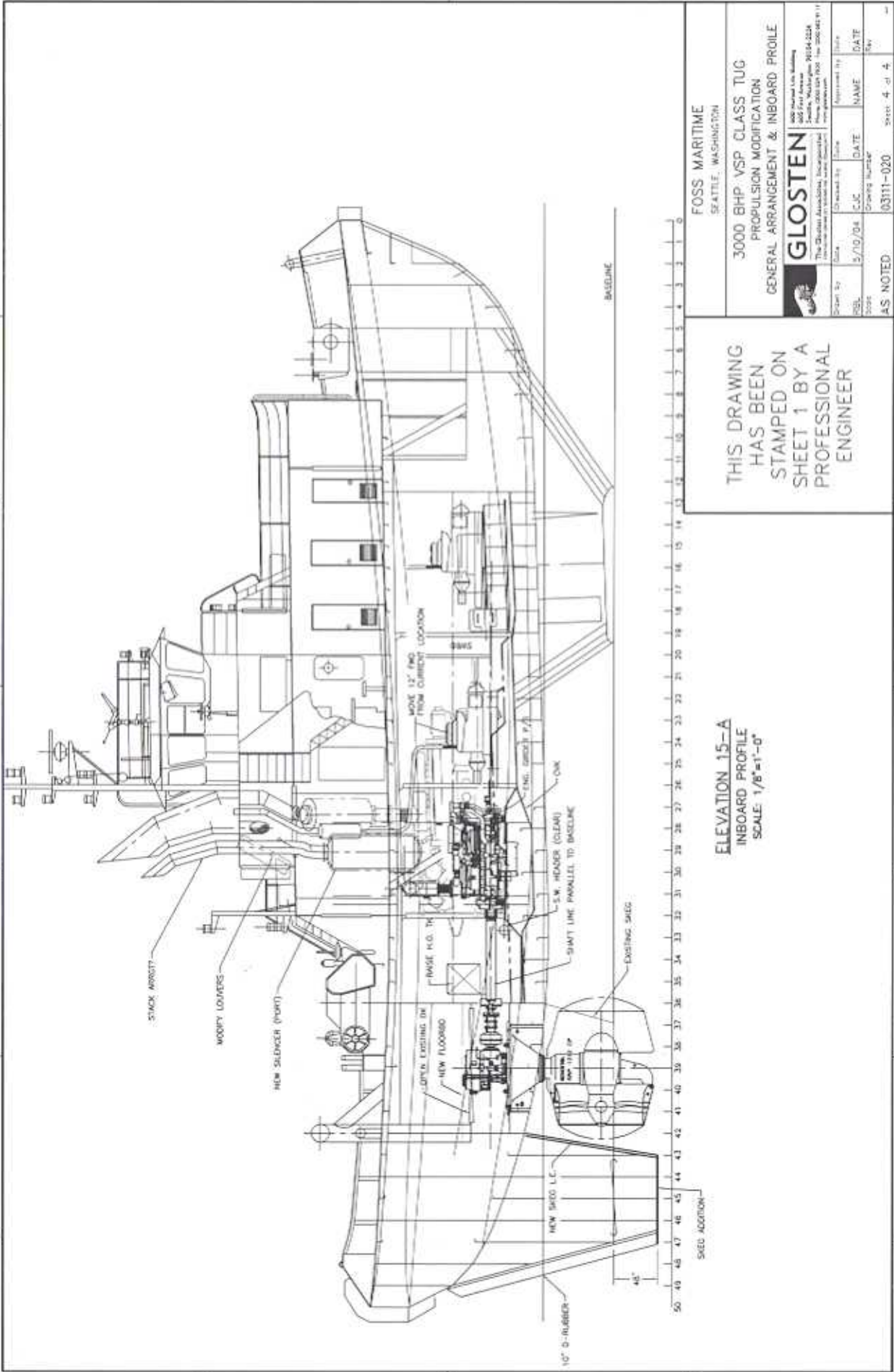
14

15

16

B

B



FOSS MARITIME  
SEATTLE, WASHINGTON

3000 BHP VSP CLASS TUG  
PROPULSION MODIFICATION  
GENERAL ARRANGEMENT & INBOARD PROFILE



**GLOSTEN**  
100 Second Ave. Building  
Seattle, Washington 98144-3224  
The Quality Association International  
Professional Engineer License No. 2006401911

Order No.	Date	Checked By	Drawn By	Scale
	5/7/04	C.J.C.		
Project No.	DATE	NAME	DATE	BY
AS NOTED				Sheet 4 of 4

THIS DRAWING  
HAS BEEN  
STAMPED ON  
SHEET 1 BY A  
PROFESSIONAL  
ENGINEER

ELEVATION 15-A  
INBOARD PROFILE  
SCALE: 1/8"=1'-0"

13

14

15

16

A

A

