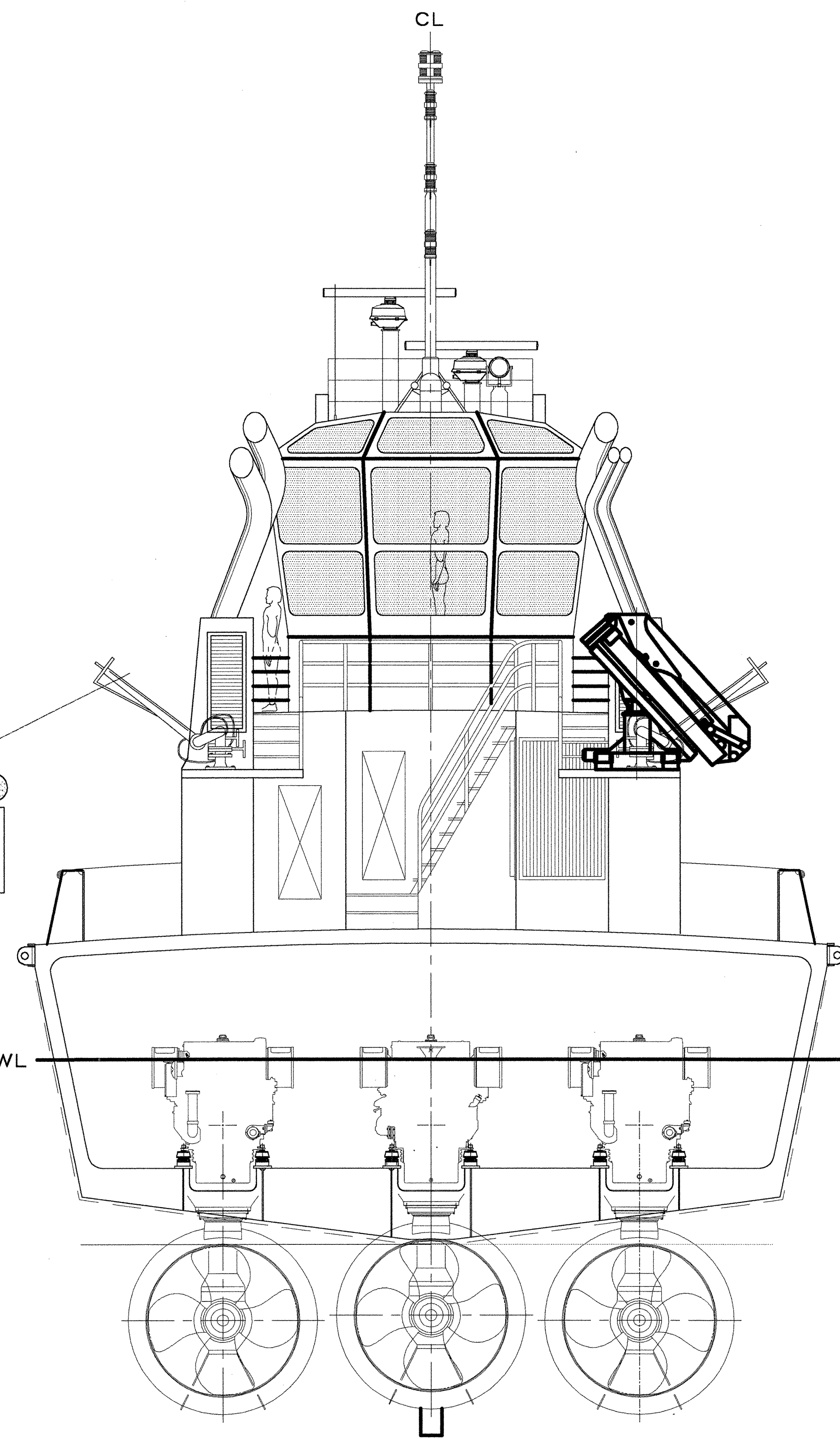
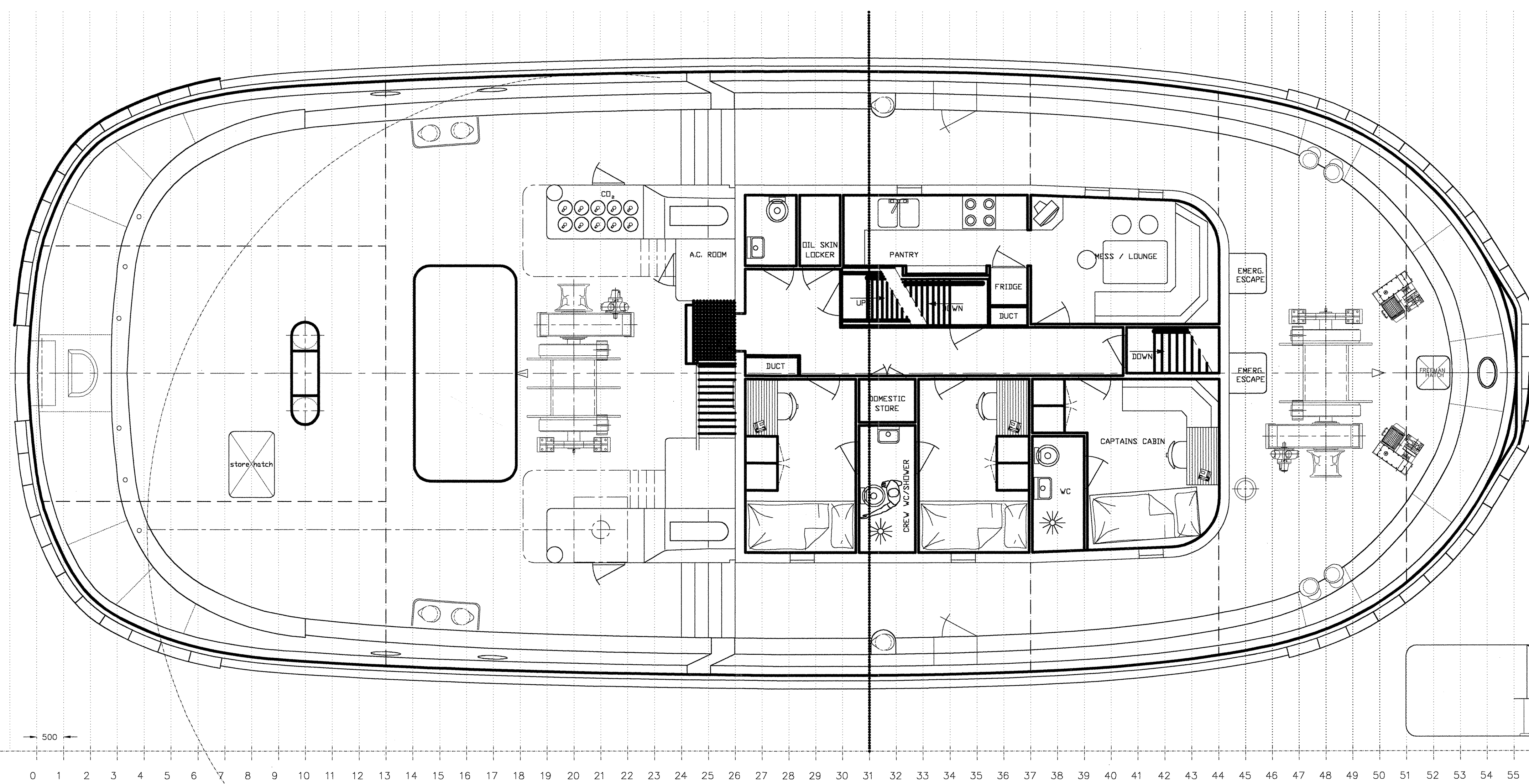


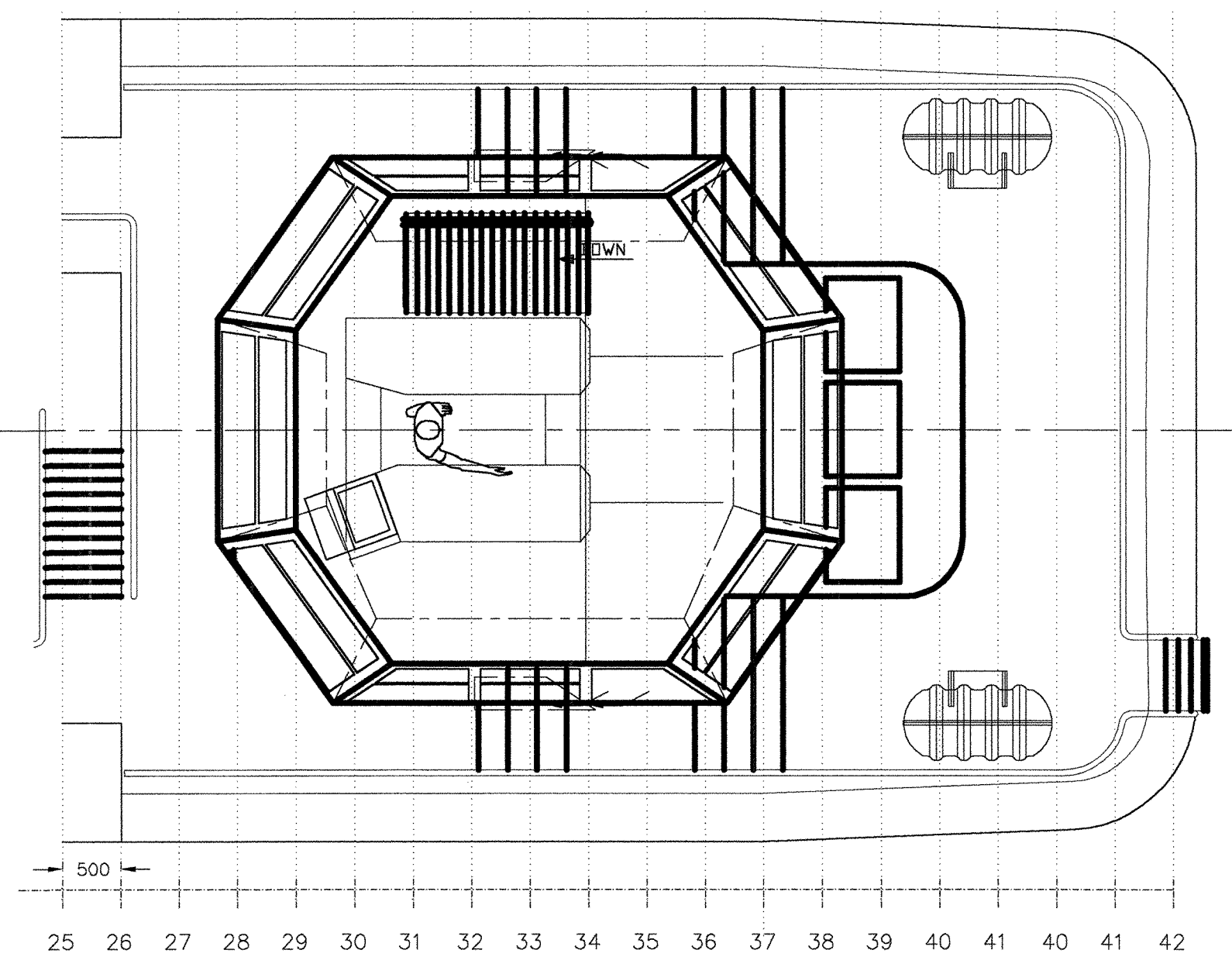
PROFILE



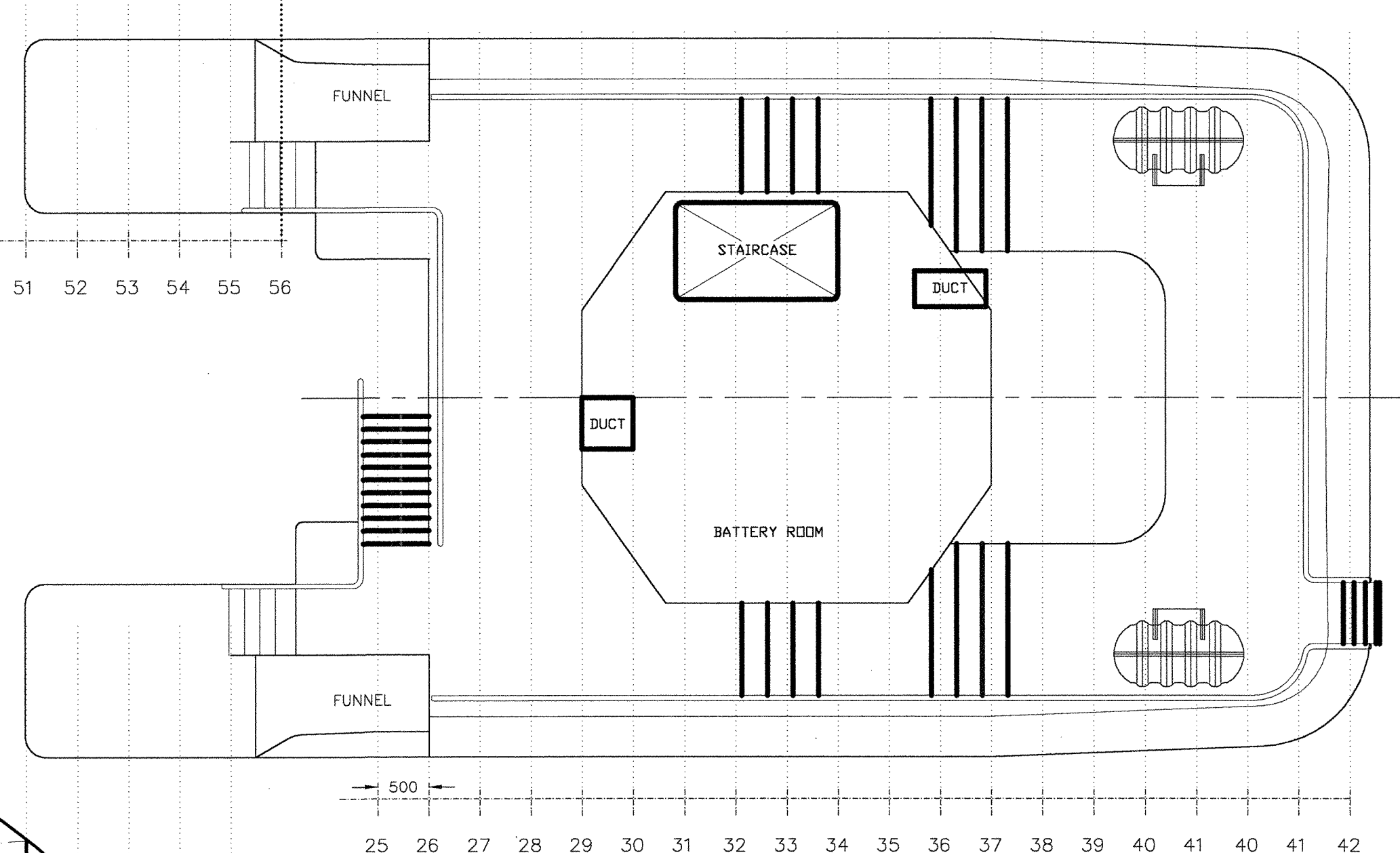
TYPICAL CROSS SECTION



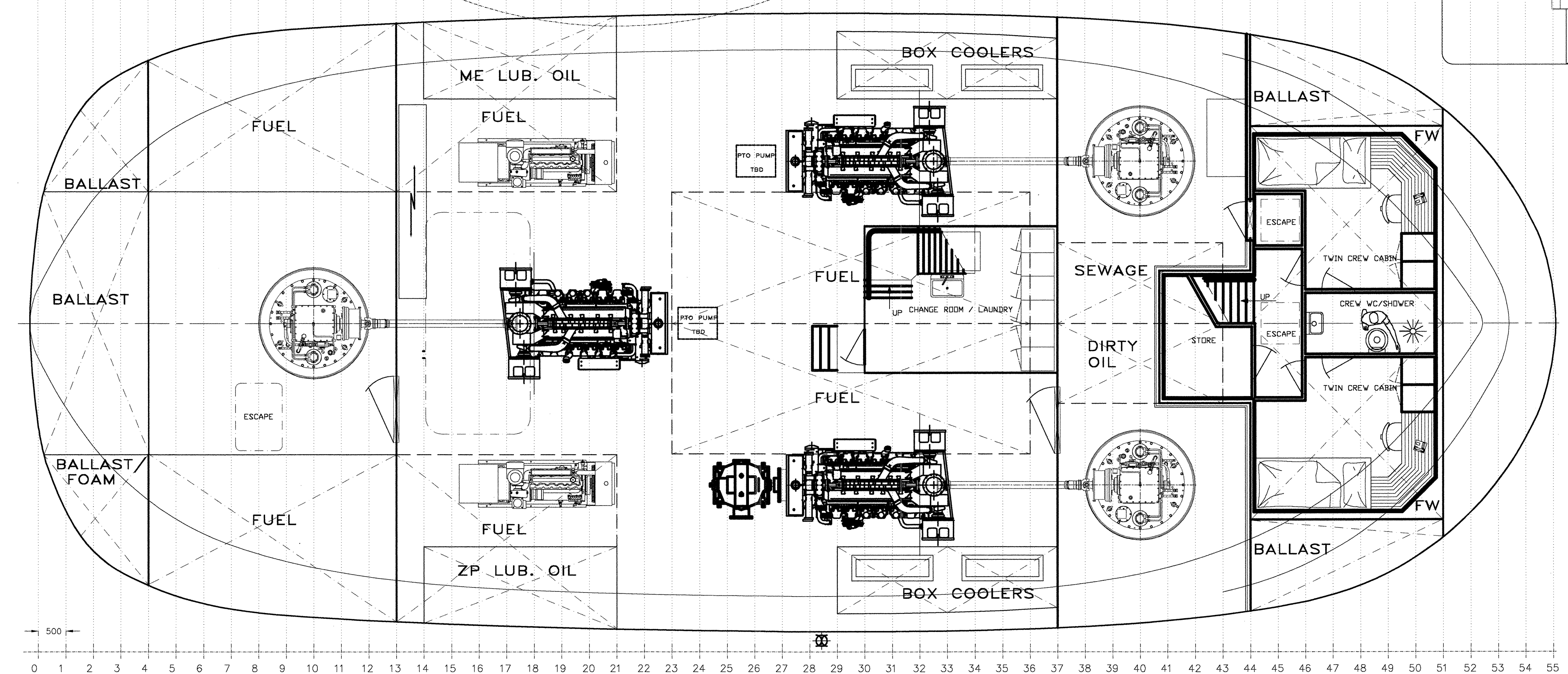
MAIN DECK



WHEELHOUSE DECK

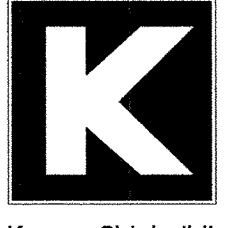
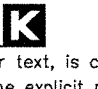


TECHNICAL-SPACE



BELOW MAIN DECK

PRINCIPAL PARTICULARS	
LENGTH OA.	28,30 M
LENGTH WL.	26,10 M
BEAM max.	11,70 M
DEPTH	5,24 M
DRAUGHT max.	5,3 M
DISPLACEMENT in tonnes (Full load)	573
BOLLARD PULL	60 tons
COMPLEMENT	8
TANKAGE approx:	
FRESH WATER capacity	12000 Ltrs
FUEL capacity	65000 Ltrs
BALLAST capacity	77000 Ltrs

		P.D.No 2002 300 DA Rotterdam The Netherlands Tel. +31 20 217017 (24 hrs) Fax. +31 20 217016 E-mail: info@kooeren.com Website: www.kooeren.com
D GENERAL MODIFICATIONS C GENERAL MODIFICATIONS B UPDATE COLLAPSIBLE MAST TO FRONT A UPDATES NOTES ISSUE REVISIONS SCALE 1:150 PROJECT: 372	W/VER 19-13 W/VER 05-11 RS 05-08 RS 27-06 DRAMA (ACT) DATE: 05/04/02 CHECK:	Kooeren Shipbuilding and Trading  <small>Notice: All, but not limited to this drawing, design and or text, is confidential. You will not copy or distribute this information, without the explicit permission of the owner of this intellectual property Kooeren Shipbuilding and Trading B.V.</small> 372-100-001 1/1 GENERAL ARRANGEMENT RT-60 complement 8 persons <small>COPYRIGHT OF THIS DRAWING AND CONTENTS IS THE PROPERTY OF OUR FIRM AND MUST NOT BE USED WITHOUT OUR PERMISSION</small>